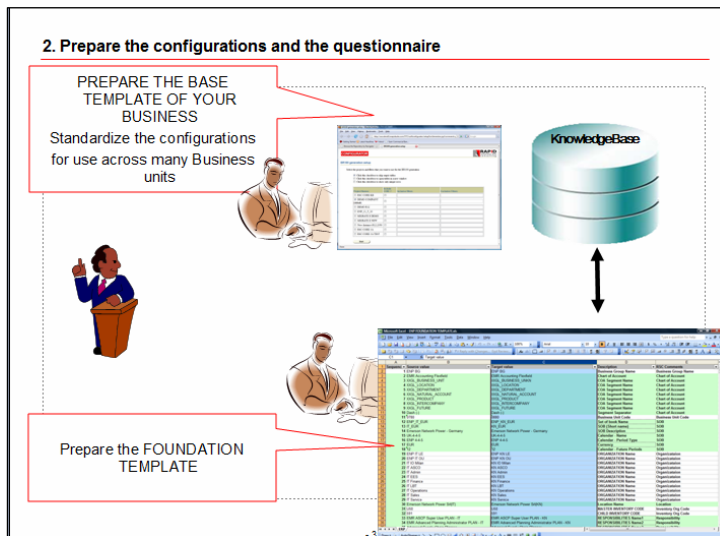
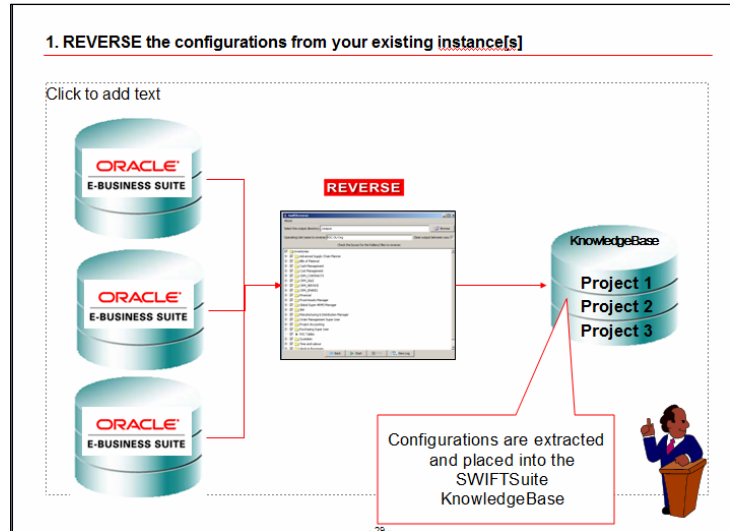


Create a new Release 12 instance using your own configurations

If you have an existing Oracle instance then the investment in the configurations in that instance is considerable. Producing a document with an up-to-date listing of those configurations is usually difficult. The full power of CONFIGURATOR is available even using your own configurations. To work with your configurations it is necessary to extract them and load them into CONFIGURATOR's KnowledgeBase.

REVERSE [see the SWIFTReverse data sheet] as many Oracle instances as needed. Once the REVERSE has completed you can obtain a full configuration listing [BR100]

The configurations can be REVERSE'd from Oracle 11i or Release 12.



Once the configurations are in the knowledge base it is easy to standardize the configurations for use with any operating unit you may want to add in the future. This standard forms the BASE configurations for your business.

The FOUNDATION TEMPLATE can then be adjusted to fit your standards and you are ready to use CONFIGURATOR to build any new instance with your own configurations.

Add new operating units to an existing Release 12 instance

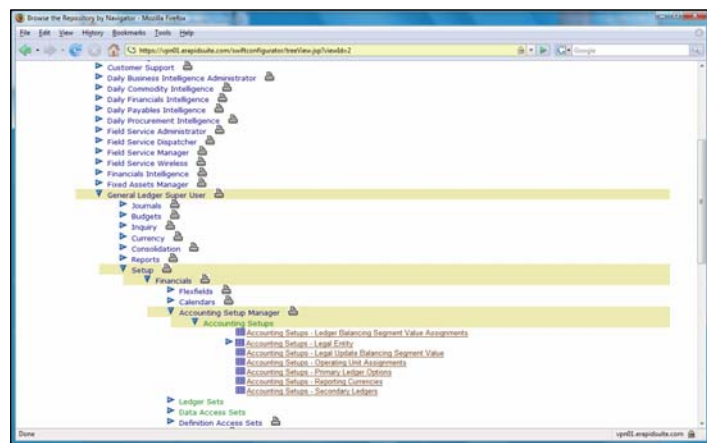
Using the FOUNDATION TEMPLATE supplied with the software, you are ready to start adding operating units. It takes only minutes to complete the FOUNDATION WIZARD steps and not much longer to configure you Oracle instance with the new operating unit.

Add new oracle modules to an existing Release 12 instance

There are many Oracle modules that configurations are available for. Refer to the SWIFTKNOWLEDGEWARE ORACLE MODULES data sheet for details on modules currently supported. Each new module comes with a FOUNDATION TEMPLATE for that module – which enables you to answer a series of simple questions and obtain a working module very quickly. These modules can be injected at any time – including many months after the implementation has occurred and the system is LIVE. [Subject to normal Oracle applications dependencies]

A very complex set of requirements for your implementation

CONFIGURATOR supports the ability to enter the configuration for any screen in any module. The menu system mirrors the oracle applications menu – thus moving around CONFIGURATOR is identical to navigating around the Oracle application menus.



The goal however is NOT to enter the configurations for every customer every time but to utilize the existing configurations or modify them to suit your industry, company or style. Once you have a set of configuration templates you are comfortable with then you can use the FOUNDATION TEMPLATE to make mass changes and limit the actual changes you need to make to 5-10%. This will ensure consistency, quality and speed.

Once the configurations are setup the way they are needed then you can validate, generate and run the result and create your oracle solution.

KEY FEATURES

Administration and Development Workbench

- Java / HTML front end supports access to all the features through a web browser-enabled, intuitive front end.
- Once knowledge is configured the interface fully supports application to an Oracle instance.

Access to KnowledgeWare

- Existing knowledge spans 30 countries and 50 Oracle e-Business Suite modules.
- Core setups provide best practice configurations with no effort.
- New knowledge is easily added to broaden the scope of any implementation.

Knowledge Management Tools

- Knowledge Management is broken down into the management of its key components – the Knowledgebase repository, Injectors and Scenarios.
- Hierarchical, structured knowledge in the repository conforms to the Oracle configuration experience of implementation consultants.
- The Knowledgebase editor facilitates entry of appropriate configuration through context sensitive help and dropdown list selection.
- Inclusive filtering to inject only appropriate configuration knowledge during an instance build.
- The knowledgebase is constructed based upon a layering structure that facilitates substitution for company or industry-specific knowledge or translations for foreign language equivalent configurations.
- Scenario management organizes and customizes the instance build process.
- Standard Oracle knowledge documentation (e.g., BR100) is maintained consistent with the actual configuration and can be generated automatically.

Integrated Data Migration Tools

- Access to the *SWIFTMigrate* functionality for moving data into and between Oracle instances.
- Data migration tools share similar look and feel with *SWIFTConfigurator*.

Security Management

- The application supports full management of all aspects of security within a user and responsibility model.
- Security Management also supports project level hierarchy.
- Most options support profiles that speed the interaction with and building instances within a project.

Rapid Solutions and Consulting

www.eRAPIDSUITE.com



Worldwide inquiries: info@erapidsuite.com

Rapid Solutions and Consulting has provided professional services, the Oracle E-Business Suite and many other innovative solutions to a number of growing companies throughout the World. Our existing client base industries include Financial Services, Automotive, Oil and Gas, Textile and Garment, Trading, Education, Cosmetic, Computer Technology, Machinery, Power Plant and Industrial organizations.

Oracle is a registered trademark of Oracle Corporation.

All other company and product names mentioned are used for identification purposes only and may be trademarks of their respective owners.

Copyright © 2007 Rapid Solutions and Consulting All Rights Reserved.