

# data sheet

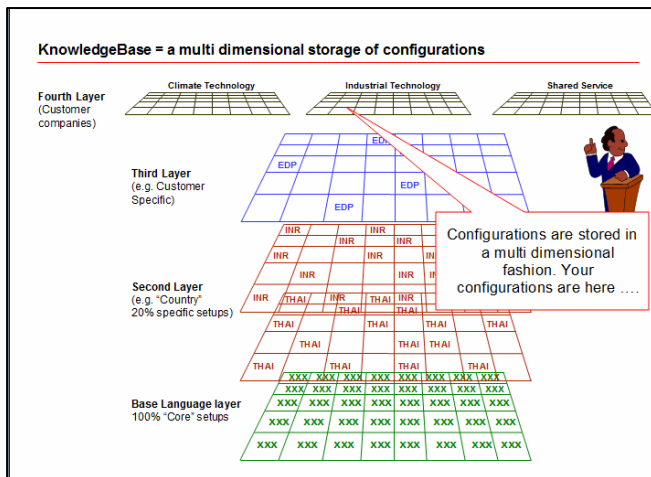
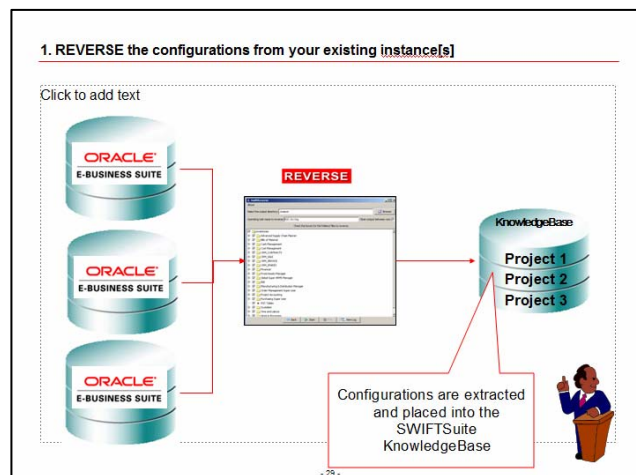
## Swift REVERSE For Oracle Release 12

- Multiple Oracle Applications instances – migrated into a single global instance.
- Manage multiple instances from a single workbench.
- Manage configuration changes and Oracle patches for many instances from a single workbench.
- Generate complete, up to date documentation of all your existing Oracle instances.
- Use SWIFTSuite tools to manage all your instances.
- Move configurations from one instance to another [even different releases]
- Produce a report of configuration differences between ANY two or more instances

### What is SWIFTRreverse ?

SWIFTRreverse is a very powerful tool that allows the extraction of configurations and selected MASTER data from any Oracle 11i or Release 12 instance. This information is then placed into the KnowledgeBase.

This is an ideal tool for moving configurations around from instance to instance as it is virtually automatic. Further that if you keep the configurations in the KnowledgeBase up to date as your master then moving configurations into any instance is quick, reliable and a full list of current configurations can be produced on demand within seconds,



Once these configurations have been placed into the knowledgebase it is then possible to :

- Inject them into another instance
- Convert them from 11i to R12
- Make a standard template for your business that allows new operating units to be prepared in minutes
- Merge them with other configurations and thus enhancing the functionality of your REVERSE'd configurations
- Merge multiple instances into a single

instance by quickly and easily resolving the instance differences and isolating configurations that relate to the business group/operating unit.

## Why should I use *SWIFTReverse* ?

Managing multiple instances can be difficult and the more instances the more likely the instance will not reflect what you expected. The issues below occur frequently and can be eliminated using a combination of REVERSE and CONFIGURATOR [See SWIFTConfigurator Data Sheet]

- What are the configuration release levels
- What are the configuration differences
- What configurations should I apply

Documentation – full configuration listings and differences between instances are only seconds away. Without REVERSE the following issues are faced on a regular basis.

- Producing an up to date list of configurations usually ranges from time consuming to not possible
- Trying to determine the differences between two or more instances – is almost impossible without a tool

The REVERSE'd configurations are LIVE and USABLE – they can be re-injected into an 11i or R12 instance. With minor effort 11i configurations can be converted and injected into a R12 instance.

REVERSE'ing your existing instances into the Knowledgebase means that you can :

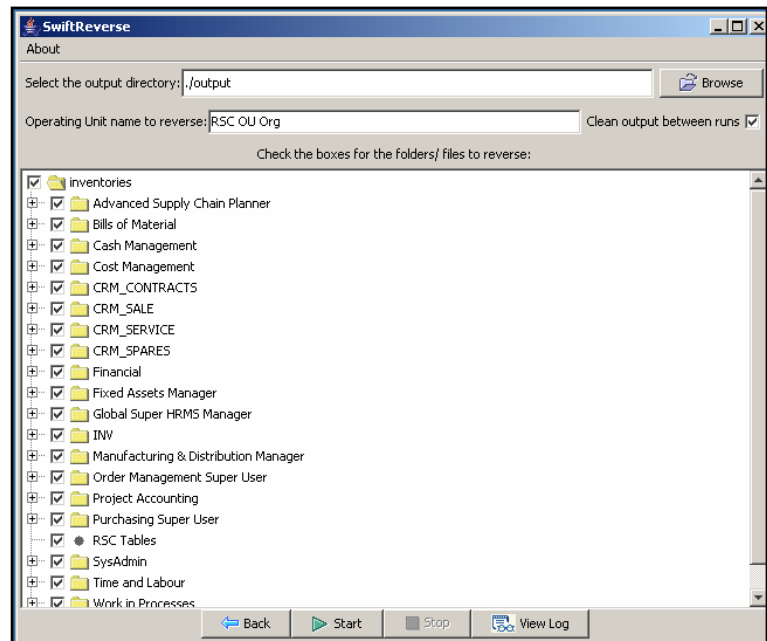
- Manage the configurations for every instance in one place
- You can build new instances at the touch of a button
- You can provide the correct updates to each instance
- You can reduce and possibly eliminate the need for cloning
- Produce full documentation or a differences report on demand

## How does *SWIFTReverse* work?

*SWIFTReverse* is a tool that you install on your local PC. The tool then connects via SQL\*Net to the oracle database and extracts configurations based on each oracle screen. For each oracle screen the software drills down behind the scenes and finds the appropriate tables and extracts the information. It is then formatted into a BR100 format and stored in EXCEL or a CSV format.

Once complete the REVERSE'd data is in the correct format for being immediately uploaded into the Knowledgebase.

Each and every screen to be reversed is shown in the REVERSE window and the user can select which options to REVERSE.



## KEY FEATURES

- Extracts configurations from an existing Oracle e-Business Suite application
- Ability to extract configurations entered into the Oracle instance and insure that BR100 documentation matches configurations setup in your instance.
- Empowers the ability to generate a new Oracle instance using these configurations
- Build a new template using the extracted configurations
- Merge the extracted configurations with existing templates
- Merge multiple Oracle instances into the knowledgebase – generate one new global instance with all previous extracted instances
- Manage all extracted instances using the SWIFTSuite tools
- SWIFTRReverse is built upon an extensible reversing engine that can be upgraded to additional module scope simply by uploading XML.

## Rapid Solutions and Consulting

[www.eRAPIDSUITE.com](http://www.eRAPIDSUITE.com)



Worldwide inquiries: [info@erapidsuite.com](mailto:info@erapidsuite.com)

**Rapid Solutions and Consulting** has provided professional services, the Oracle E-Business Suite and many other innovative solutions to a number of growing companies throughout the World. Our existing client base industries include Financial Services, Automotive, Oil and Gas, Textile and Garment, Trading, Education, Cosmetic, Computer Technology, Machinery, Power Plant and Industrial organizations.

Oracle is a registered trademark of Oracle Corporation.

All other company and product names mentioned are used for identification purposes only and may be trademarks of their respective owners.

Copyright © 2007 Rapid Solutions and Consulting All Rights Reserved.